

# TR622 SERIES



The TR622 Trommel combines high production rates with ease of use in a robust, portable and versatile screening plant that is ideal for applications such as top soil, recycling, composting and is proven in C&D waste. The TR622 incorporates impressive design features such as the 180° Radial conveyor and intelligent hydraulic load sensing system makes the TR622 the most fuel efficient up to date Trommel available on the market to date.

**FUEL CONSUMPTION**  
**12-15 LTR/HR LITRES**  
**(3-4 USG) PER HOUR**



Available in Mobile, Track or Static chassis formats

HMI Control Panel provides easy fine tuning for accurate application performance.

Various aperture meshes, punch plate panels, fully welded punch plate drums with scrolls available

Innovative design of feeder allows for ease of drum removal and mesh change.

Oversize discharge height of up to 4m (13'1")

180° Radial Conveyor creates a stockpile volume of up to 1064m<sup>3</sup> (1392 yd<sup>3</sup>)

2m (6'9") X 6.9m (22'6") long drum provides a screening area of 24.8m<sup>3</sup> (32 yds<sup>3</sup>)

**THE MOST FUEL EFFICIENT TROMMEL AVAILABLE.... ANYWHERE!**



TR622 screening waste wood- Ireland



TR622 processing mulch - USA



TR622 processing C&D waste - Ireland



TR622 processing contaminated waste - Japan

## APPLICATIONS

Construction and Demolition waste

Sand and Gravel

RDF processing

Compost

Topsoil

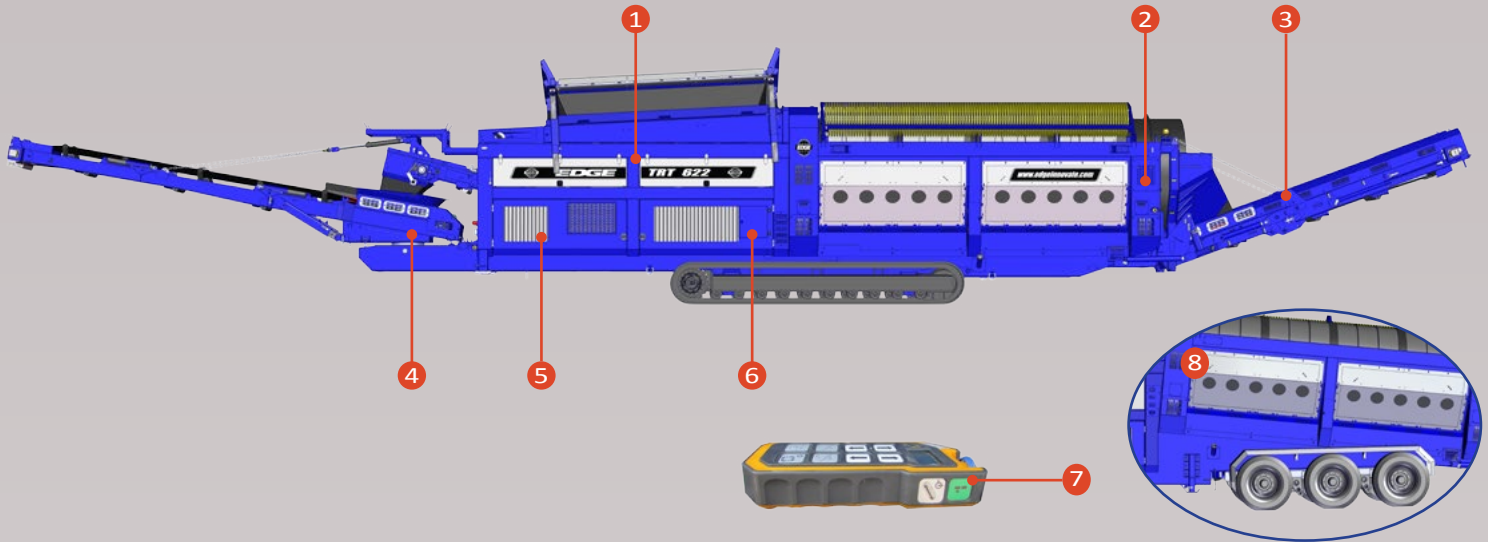
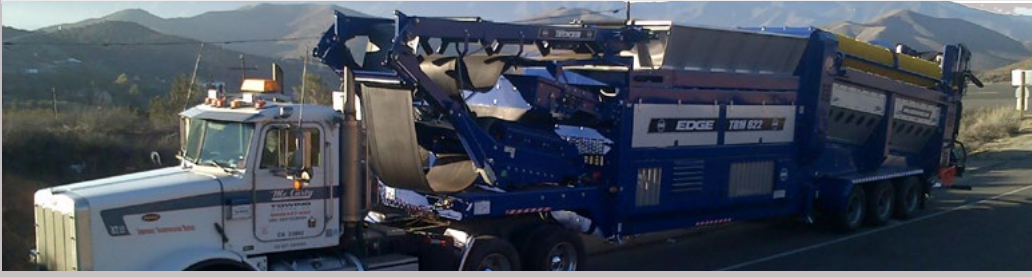
Wood Waste

Skip Waste

Commercial and Industrial waste

Green Waste

# TR622 FEATURES & BENEFITS



## Hopper

The TR622 Hopper capacity ranges from 7.5m<sup>3</sup> (9.8 yds<sup>3</sup>) to 8.5m<sup>3</sup> (12 yds<sup>3</sup>) depending on chassis format. The hopper houses a 1200mm (48") wide, variable speed feeder conveyor with load sensing functions to prevent drum overload. The hydraulic sliding feeder enables for quick drum and mesh exchange.

1

## Drum (barrel)

The 2m (6'9") X 6.9m (22'6") long drum provides a screening area of 24.8m<sup>3</sup> (32 yds<sup>3</sup>) with adjustable screening angle. Driven via a direct 4 wheel drive system with a variable drum speed of 0-24RPM. Various aperture meshes, punch plate panels, fully welded punch plate drums with scrolls are available.

2

## Oversize Conveyor

A telescopic, heavy duty 1050mm (42") wide conveyor providing a discharge height ranging from 4m (TRM) to 2.8m (TRT). Impact bars on feedboot section absorbs the impact from screened material, prolonging the life-time of the belt. Hydraulic head fold function enables for quick transfer from transport to operational mode.

3

## Radial Fines Conveyor

The 180° radial fines conveyor consists of a 1050mm (42") wide belt providing a discharge height ranging from 5m (TRM) to 5.9m (TRT). Able to create radial stockpiles up to 1064m<sup>3</sup> (1392 yd<sup>3</sup>). Hydraulic folding function enables for quick transfer from transport to operational mode.

4

## Powerunit

Powered by a CATERPILLAR C4.4ATAAC ACERT Industrial Power Unit - EPA Tier III / EU, Stage 3A compliant engine producing 96Kw (129HP) at 2100RPM. Idle Speed of 800RPM and operational speed of 1700RPM increasing to 2100RPM whilst tacking. Average fuel consumption of 12-15 Ltr/hr. (3-4USG)

5

## Control Panel

The Interface provides easy fine tuning for accurate application performance. Displays Engine load, PVG valve pressures, hydraulic oil temp & fuel consumption while machine is still operating. All engine info & diagnostic faults are accessed through the panel

6

## Remote Functionality

A number of features can be controlled via the radio remote. Including; start/stop unit functioning, tipping grid with time up/down function, raise/lower front & rear jacklegs, variable engine speed, rotate radial conveyor, adjust feeder belt speed and a machine shutdown button

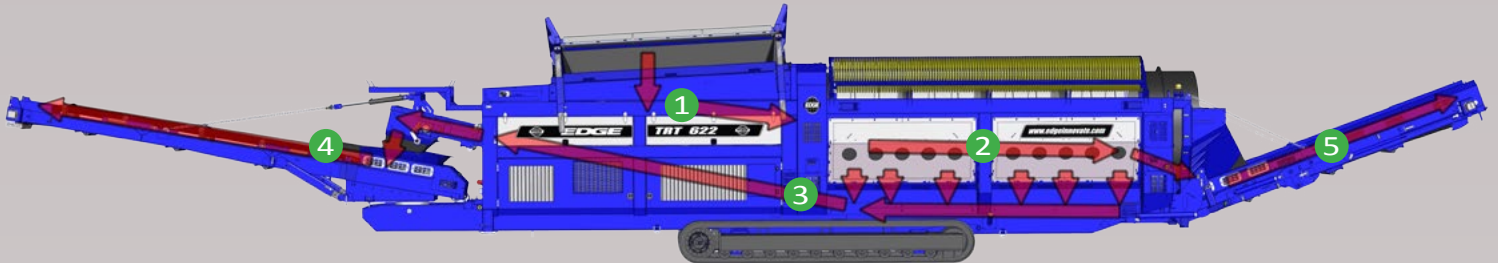
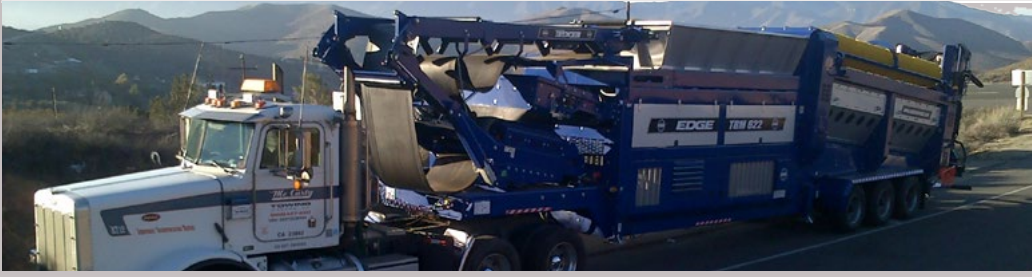
7

## Mobile Bogie

Fully road legal towable tri-axle ultra underslung braking bogie. Bogie Width outside of tyre to outside of tyre of 2700mm (8' 10").

8

# TR622 FLOW OF MATERIAL



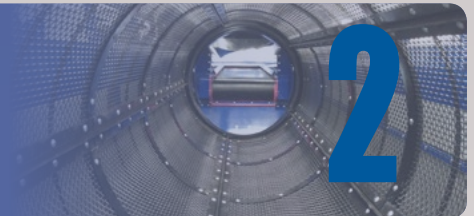
## Feeder

- Intelligent hydraulic load sensing system to prevent overload. Feeder belt speed varies depending on drum pressure in automatic mode
- Variable belt speed of 0-0.25m/sec (0-49ft/m)
- Belt speed can be adjusted via the control panel and remote control



## Screening (Drum/barrel)

- Material is screened via the 2m (6'9") X 6.9m (22'6") long drum
- Screening area of 24.8m<sup>3</sup> (32 yds<sup>3</sup>)
- Variable screening angle of 0-5° (TRT) or 3-7° (TRM)
- Variable drum speed of 0-24RPM depending on application adjusted via control panel



## Collection Conveyor

- 1500mm (60") wide collection conveyor with a belt speed of 2.4m/sec (473ft/m)
- Belt speed is not variable through the control panel
- Carries screen material from drum to radial conveyor



## Radial Conveyor

- 180° Radial conveyor with hydraulic working angle adjustment
- Discharge height of 5m (16'5") -TRM / 4.9m (16') -TRT
- Belt speed of 2.9m/sec (571ft/m)
- Working angle adjustment via hydraulic control valve
- Remote radial left / right function available



## Oversize Conveyor

- Hydraulic telescopic oversize conveyor
- Belt speed of 1.3m/sec (49ft/m)
- Stockpiles oversize material from drum via it's 1050mm (42") wide belt
- Conical stockpile of 34m<sup>3</sup> (44 yds<sup>3</sup>) - TRT / 95m<sup>3</sup> (124 yds<sup>3</sup>) - TRM



# TR622 OPTIONS



## TRT622- Track Trommel



Fully tracked for on-site manoeuvrability

## TRM622 - Mobile Trommel



Mobile trommel is perfect for customers with multiple sites or for the rental market

## TRS622 - Static Trommel



Option of hydraulic or direct electric. Suitable for indoor and outdoor applications

## Diesel / Hydraulic



Cat4.4 96Kw (129HP)  
Tier 3 / 3B & Tier 4 Final engines available

## Double Cleaning Brushes



Double hydraulic drum cleaning brushes available for tough screening tasks

## Live Head



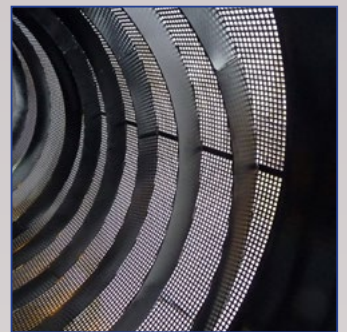
Twin deck vibrating grid with remote tipping function.

## Tipping Grid



Option of manual or remote tipping grids available with various bofor bars

## Drum Types



Various drum types, mesh apertures, punch plates and spiral drums available

## Overband Magnet



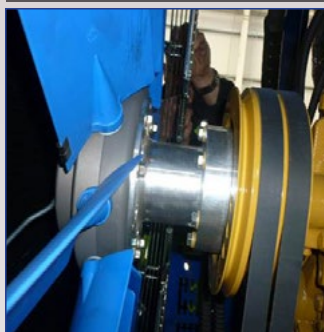
Overband magnet fitted to collection conveyor to extract ferrous metal

## Hopper Extensions



Remote tracking, stop/start, engine rev adjusting and increase/decrease chamber opening

## Reversible Fan



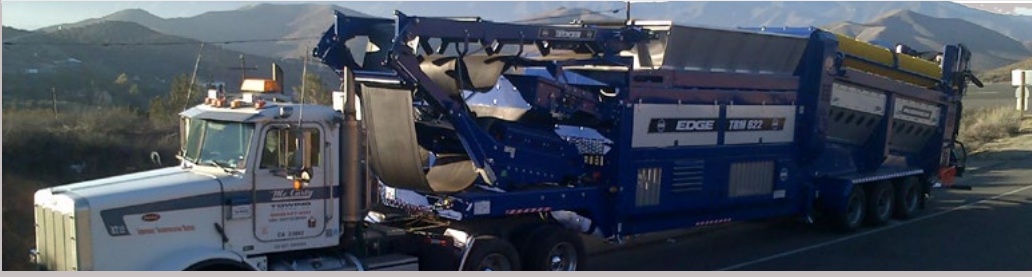
Reversible fan is recommended for dusty applications such as wood chip

## Lighting Board



Lighting boards available for road towing. Must specify voltage

# TR622-SERIES TECHNICAL SPECIFICATIONS



Machine	Feed-In Height	Screening Area	Oversize Discharge Height	Oversize Stockpile Volume	Fines Discharge Height	Fines Stockpile Volume
<b>TRT622</b>	3.66m (12')	24.8m <sup>2</sup> (32 yds <sup>2</sup> )	3.5m (11'6")	34m <sup>3</sup> (44 yds <sup>3</sup> )	4.9m (16')	1056m <sup>3</sup> (1381 yds <sup>3</sup> )
<b>TRM622</b>	3.2m (10'6")	24.8m <sup>2</sup> (32 yds <sup>2</sup> )	4m (13'1")	95m <sup>3</sup> (124 yds <sup>3</sup> )	5m (16'5")	1064m <sup>3</sup> (1392 yds <sup>3</sup> )

## TRANSPORT DIMENSIONS

Machine	*Weight	Height	Length	Width
<b>TRT622</b>	36.5 Tonnes (40.2UST)	3.4m (11'2")	15.9m (52'2")	2.9m (9'5")
<b>TRM622</b>	32 Tonnes (35.2UST)	4.1m (13'6")	18.4m (60'4")	2.9m (9'5")

## OPERATING DIMENSIONS

Machine	Height	Length	Width
<b>TRT622</b>	5m (16'5")	24.8m (81'2")	2.9m (9'5")
<b>TRM622</b>	5m (16'5")	27.7m (90'9")	2.9m (9'5")